

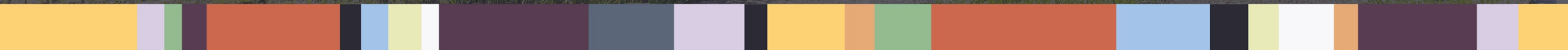


SIMPLY HOMES

Wentworth Road

Hertford SG13 8JP

Price Guide £600,000





Wentworth Road

Hertford SG13 8JP







- Wentworth Road -

- Ground Floor -

Kitchen

18'10" x 8'5" (5.75m x 2.57m)

Dining/Living Room

23'8" x 9'6" (7.22m x 2.92m)

Hallway

Bedroom Two

14'5" x 10'7" (4.40m x 3.23m)

Bedroom Three

10'11" x 8'5" (3.34m x 2.59m)

Family Bathroom

- First Floor -

Landing

Bedroom One (Principal)

18'8" x 14'7" (5.70m x 4.45m)

En-suite

- Exterior -

Rear Garden

Front Garden

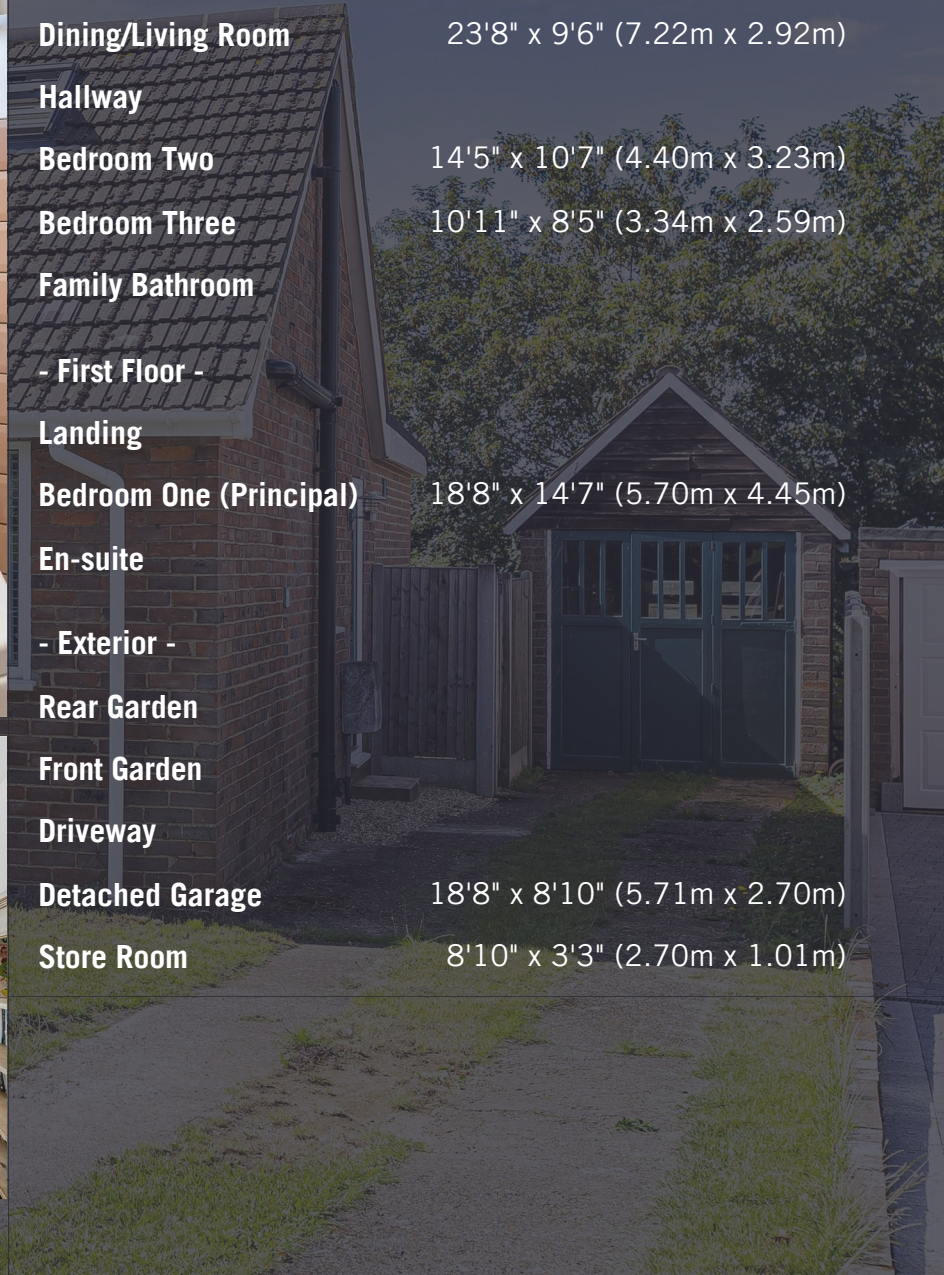
Driveway

Detached Garage

18'8" x 8'10" (5.71m x 2.70m)

Store Room

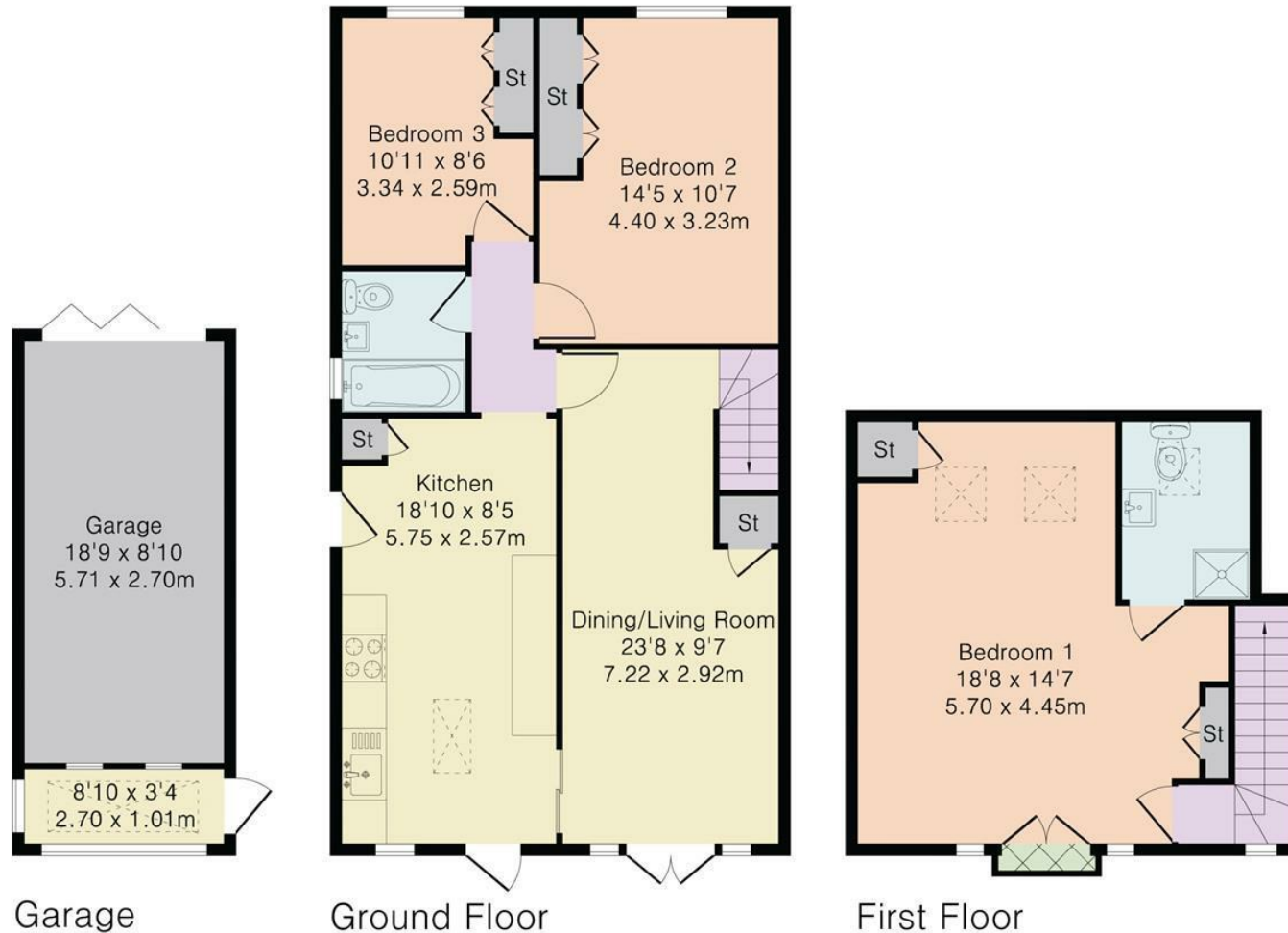
8'10" x 3'3" (2.70m x 1.01m)







Approximate Gross Internal Area 1253 sq ft – 116 sq m
Ground Floor Area 709 sq ft – 66 sq m
First Floor Area 346 sq ft – 32 sq m
Garage Area 198 sq ft – 18 sq m







SIMPLY HOMES

115 Fore Street | Hertford | SG14 1AS | 01992 558 557 | sales@simply-homes.co.uk | simply-homes.co.uk | Find us on

